

ALCOVY PLACE

ALPHARETTA, GA

The History

Alcovy comes from Native American meaning a place for all to gather and bask in the simple joys of life...family, friends, nature. The Georgia Alcovy river was named for these simple pleasures, Pawpaw Lilies blanket the land that radiates the warmth of the sun while bringing the comfortable breeze from the river.

Alcovy Place carries this natural beauty into your living space, with charming spaces filled with a serenity emanating from the meandering Alpha creek, framed by hardwood trees, beautiful architecture, and a pleasant breeze. Directing the attention of the neighborhood towards the creek, the walking path, and its beauty brings the meaning of Alcovy to life. A place where outdoor living spaces are plentiful and well thought out... a place where you will enjoy the simple pleasures of life, with friends and family.

The Development

“The last opportunity to be directly on the Loop” is how we have been described by Alpharetta locals. And not only is it the last opportunity to live on the loop, it might just well be the most beautiful and picturesque length of the loop.

With homes larger than other homes on the loop, ranging in the 3,000’ to nearly 4,000’ sizes, equipped with elevators, and outdoor roof level porches and terrace level patios, the opportunity to design your gathering place is yours.

High level finishes, casement windows, and a history of high quality craftsmanship are all brought to you by Excel Capital Construction and the development team of Alcovy.

With only ten homesites available, the opportunity is now.

ALCOVY PLACE

ALPHARETTA, GA

COMMUNITY

- Walking distance to Downtown Alpharetta & Avalon
- Amazing dining & retail space, just steps from your home
- Direct access to the Alpharetta Loop

EXTERIOR OPTIONS

- Tudor Eclectic and Italianate exteriors featuring brick, natural wood, natural stone, & plaster
- Professionally landscaped community, including irrigation systems
- Sherwin Williams deluxe exterior paint
- Garage door with opener
- Optional outdoor Lighting and Surround Sound System

INTERIOR OPTIONS

- Pre-finished Hardwood Flooring and premium carpet options
- Designer Tile Flooring
- Trim accent wall and detail options
- Crown Moulding throughout
- 3 Car Garage
- Terraces & Outdoor Living Spaces available
- Elevators available
- Smart Home and Energy Efficient options available

KITCHEN & BATH DESIGNS

- Designer sink options
- Under Cabinet Lighting
- Quartz Countertops with Ceramic Tile Backsplash
- Upgraded appliance package options
- 42" Upper Cabinets with Soft Close Doors
- Quartz Countertops & Rectangular Under Mount Sinks
- Rain Head in Master Bathroom
- Upgrade Options available

ALCOVY PLACE

ALPHARETTA, GA

HOME ENHANCEMENT OPTIONS

- Wolf, Thermador, and SubZero Appliance packages available
- Rectangle, floating firebox
- Body Sprayers in Master Shower
- White Apron Front Sink in Kitchen
- Family Room Fireplace
- Floating Shelves in Family Room
 - One or both sides
- Master Bedroom Accent Wall
- Dining/Family Room Stair Accent Wall
- Tankless Water Heater
- Outdoor Speaker Pre-Wire
- Surround Sound and Speaker Pre-Wire
- Surround Sound and Speaker Trim Outs
- Security System Trim Outs

ALCOVY PLACE

ALPHARETTA, GA



ALCOVY PLACE

ALPHARETTA, GA



Lot # 2 Basement Plan

CEILING HEIGHT : 8'
HEATED AREA: 357 SQFT
UNHEATED AREA: 306 SQFT
TOTAL HEATED AREA: 3,497 SQFT



Lot # 2 First Floor Plan

CEILING HEIGHT : 10'
HEATED AREA: 1,211 SQFT
UNHEATED AREA: 184 SQFT
TOTAL HEATED AREA: 3,497 SQFT



Lot # 2 Lower Level Plan

CEILING HEIGHT : 9'
HEATED AREA: 650 SQFT
GARAGE: 745 SQFT
TOTAL HEATED AREA: 3,497 SQFT



Lot # 2 Second Floor Plan

CEILING HEIGHT : 9'
HEATED AREA: 1,279 SQFT
UNHEATED AREA: 56 SQFT
TOTAL HEATED AREA: 3,497 SQFT



Lot # 3 Basement Plan

CEILING HEIGHT : 8'
HEATED AREA: 357 SQFT
UNHEATED AREA: 306 SQFT
TOTAL HEATED AREA: 3,497 SQFT



Lot # 3 First Floor Plan

CEILING HEIGHT : 10'
HEATED AREA: 1,211 SQFT
UNHEATED AREA: 184 SQFT
TOTAL HEATED AREA: 3,497 SQFT



Lot # 3 Lower Level Plan

CEILING HEIGHT : 9'
HEATED AREA: 650 SQFT
GARAGE: 745 SQFT
TOTAL HEATED AREA: 3,497 SQFT



Lot # 3 Second Floor Plan

CEILING HEIGHT : 9'
HEATED AREA: 1,279 SQFT
UNHEATED AREA: 56 SQFT
TOTAL HEATED AREA: 3,497 SQFT

Floor Plans are subject to errors, omissions, and changes without notice, 01-21-2021



ALCOVY PLACE

ALPHARETTA, GA



Lot # 5 Bonus Area Plan

CEILING HEIGHT : 9'
HEATED AREA: 540 SQFT
UNHEATED AREA: 100 SQFT
TOTAL HEATED + BONUS AREA: 3,808 SQFT



Lot # 5 First Floor Plan

CEILING HEIGHT : 10'
HEATED AREA: 1,119 SQFT
UNHEATED AREA: 44 SQFT
TOTAL HEATED AREA: 2,868 SQFT



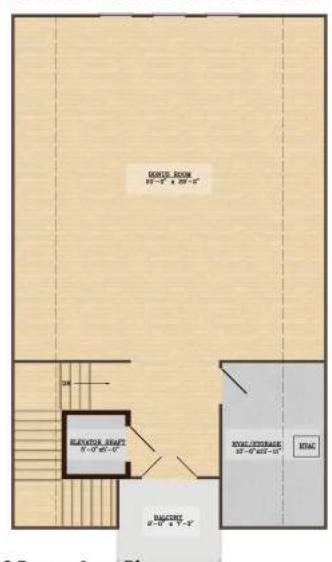
Lot # 5 Lower Level Plan

CEILING HEIGHT : 9'
HEATED AREA: 734 SQFT
UNHEATED : 33 SQFT
GARAGE: 688 SQFT
TOTAL HEATED AREA: 2,868 SQFT



Lot # 5 Second Floor Plan

CEILING HEIGHT : 9'
HEATED AREA: 1,015 SQFT
UNHEATED AREA: 56 SQFT
TOTAL HEATED AREA: 2,868 SQFT



Lot # 6 Bonus Area Plan

CEILING HEIGHT : 9'
HEATED AREA: 940 SQFT
UNHEATED AREA: 132 SQFT
TOTAL HEATED AREA (w/ BONUS) : 3,728 SQFT



Lot # 6 First Floor Plan

CEILING HEIGHT : 10'
HEATED AREA: 1,039 SQFT
UNHEATED AREA: 124 SQFT
TOTAL HEATED AREA: 2,788 SQFT



Lot # 6 Lower Level Plan

CEILING HEIGHT : 9'
HEATED AREA: 734 SQFT
UNHEATED : 33 SQFT
GARAGE: 688 SQFT
TOTAL HEATED AREA: 2,868 SQFT

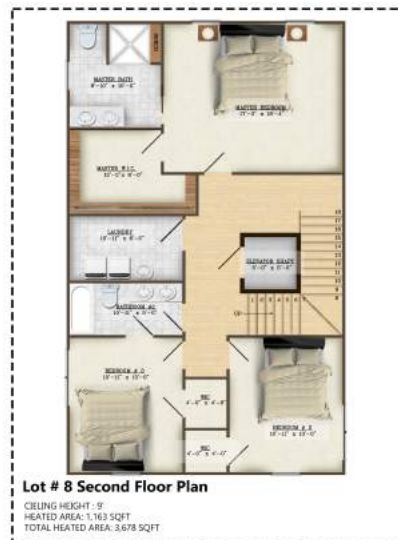
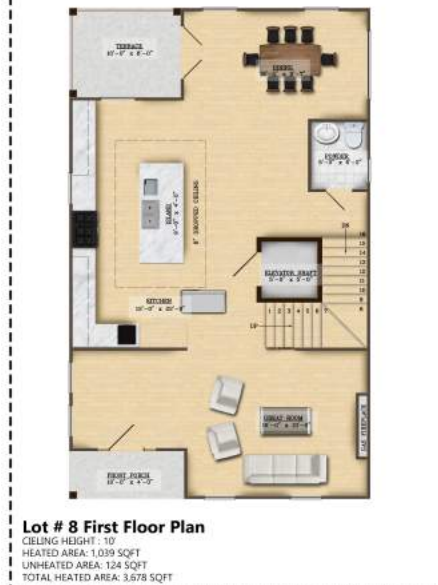
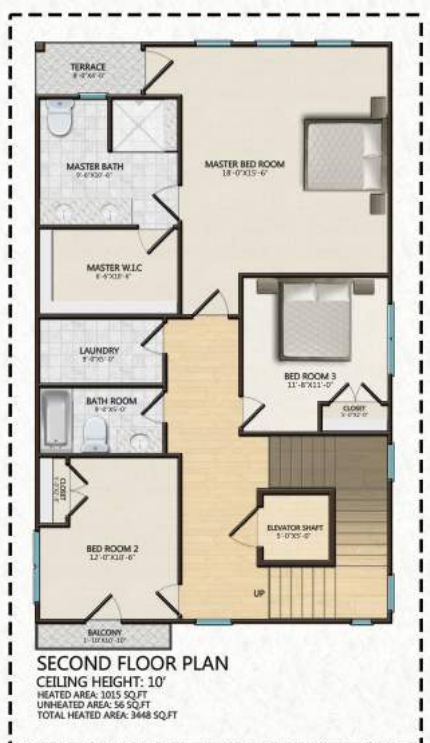
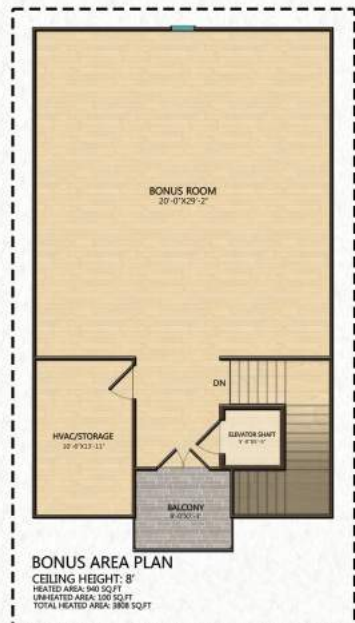


Lot # 6 Second Floor Plan

CEILING HEIGHT : 9'
HEATED AREA: 1,015 SQFT
UNHEATED AREA: 56 SQFT
TOTAL HEATED AREA: 2,788 SQFT

ALCOVY PLACE

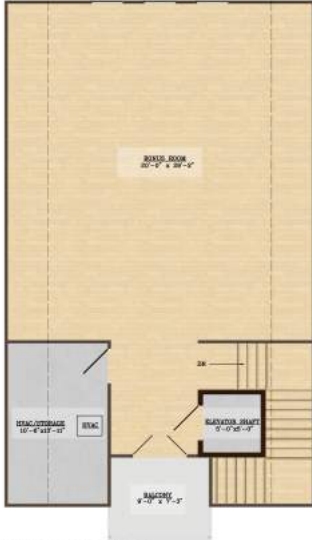
ALPHARETTA, GA



Floor Plans are subject to errors, omissions, and changes without notice, 01-21-2021

ALCOVY PLACE

ALPHARETTA, GA



Lot # 9 Bonus Area Plan

CEILING HEIGHT: 9'
 HEATED AREA: 940 SQFT
 UNHEATED AREA: 100 SQFT
 TOTAL HEATED AREA: 3,808 SQFT



Lot # 9 First Floor Plan

CEILING HEIGHT: 10'
 HEATED AREA: 1,119 SQFT
 UNHEATED AREA: 44 SQFT
 TOTAL HEATED AREA: 3,808 SQFT



Lot # 9 Lower Level Plan

CEILING HEIGHT: 9'
 HEATED AREA: 734 SQFT
 UNHEATED AREA: 33 SQFT
 GARAGE: 688 SQFT
 TOTAL HEATED AREA: 3,808 SQFT



Lot # 9 Second Floor Plan

CEILING HEIGHT: 9'
 HEATED AREA: 1,015 SQFT
 UNHEATED AREA: 32 SQFT
 TOTAL HEATED AREA: 3,808 SQFT



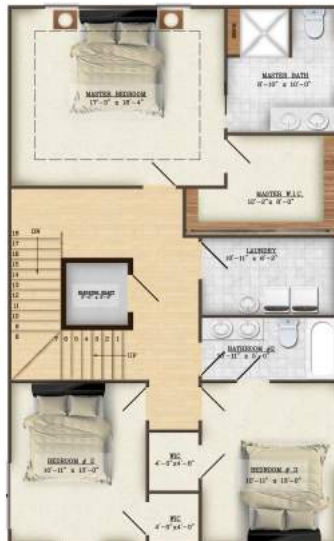
Lot # 10 First Floor Plan

CEILING HEIGHT: 10'
 HEATED AREA: 1,039 SQFT
 UNHEATED AREA: 124 SQFT
 TOTAL HEATED AREA: 3,678 SQFT



Lot # 10 Lower Level Plan

CEILING HEIGHT: 9'
 HEATED AREA: 672 SQFT
 UNHEATED AREA: 44 SQFT
 GARAGE: 421 SQFT
 TOTAL HEATED AREA: 3,678 SQFT



Lot # 10 Second Floor Plan

CEILING HEIGHT: 9'
 HEATED AREA: 1,163 SQFT
 TOTAL HEATED AREA: 3,678 SQFT

ALCOVY PLACE

ALPHARETTA, GA



About Crosby Design Group

As a full service interior design firm, Crosby Design Group (CDG) provides unparalleled customer service with a primary emphasis on building long term professional relationships. Crosby Design Group's expertise spans Residential, Multifamily, Design Centers, Sales Galleries, Renovation, Re-Branding Multifamily, Student Housing, Builder Services and FF&E Merchandising projects of varying sizes and scope. Most importantly, Crosby Design Group takes pride in the fact that so many of our clients are repeat customers who recognize CDG's high level of commitment, and who have been instrumental in the company's regional expansion. With 20 years in the interior design business, CDG's team is dedicated to your project and focused on its success from inception to beyond completion.



Mandy Carbia

Our Designer

As an award-winning residential designer, Mandy strives to always produce memorable designs. With 15+ years of experience, she is highly skilled at guiding clients through the entire design process, making their dreams become reality. She offers a balance of creativity, collaboration and forward thinking with a structured, organized and detailed mentality; enabling her to deliver designs that exceed her client's highest expectations no matter how big or small the job. Her design experience ranges from retail staging, model homes, remodels/makeovers and new construction design. Mandy joined Crosby Design Group in 2013 and has been a strong member of the Residential team ever since.

ALCOVY PLACE

ALPHARETTA, GA



EXCEL CAPITAL
Construction LLC

About the Builder

Excel Capital Construction is a leader in the Greater Atlanta building industry with a reputation for high standards of quality and attention to detail. Founded in 2007, Excel Capital Construction takes pride in the construction and development of landmark custom homes, extensive townhome projects, and commercial endeavors.

Management background in ECC includes MBAs, engineers, architects, and building construction professionals that equip us to succeed in a dynamic, competitive environment. Licensed and insured, ECC pushes standards in construction management ever higher with our innovative vision.

ECC strives to create win-win client relationships by providing honest, fair, rewarding experiences with new homeowners, subcontractors, and salespeople in an atmosphere where individuals and families can experience the pride and satisfaction of designing and/or purchasing their own home.